

PART OF THE N.W. 1/4, SEC. 29, T.7N., R.1W., S.L.B. & M.  
**NORTH OGDEN ESTATES**

184

IN NORTH OGDEN CITY

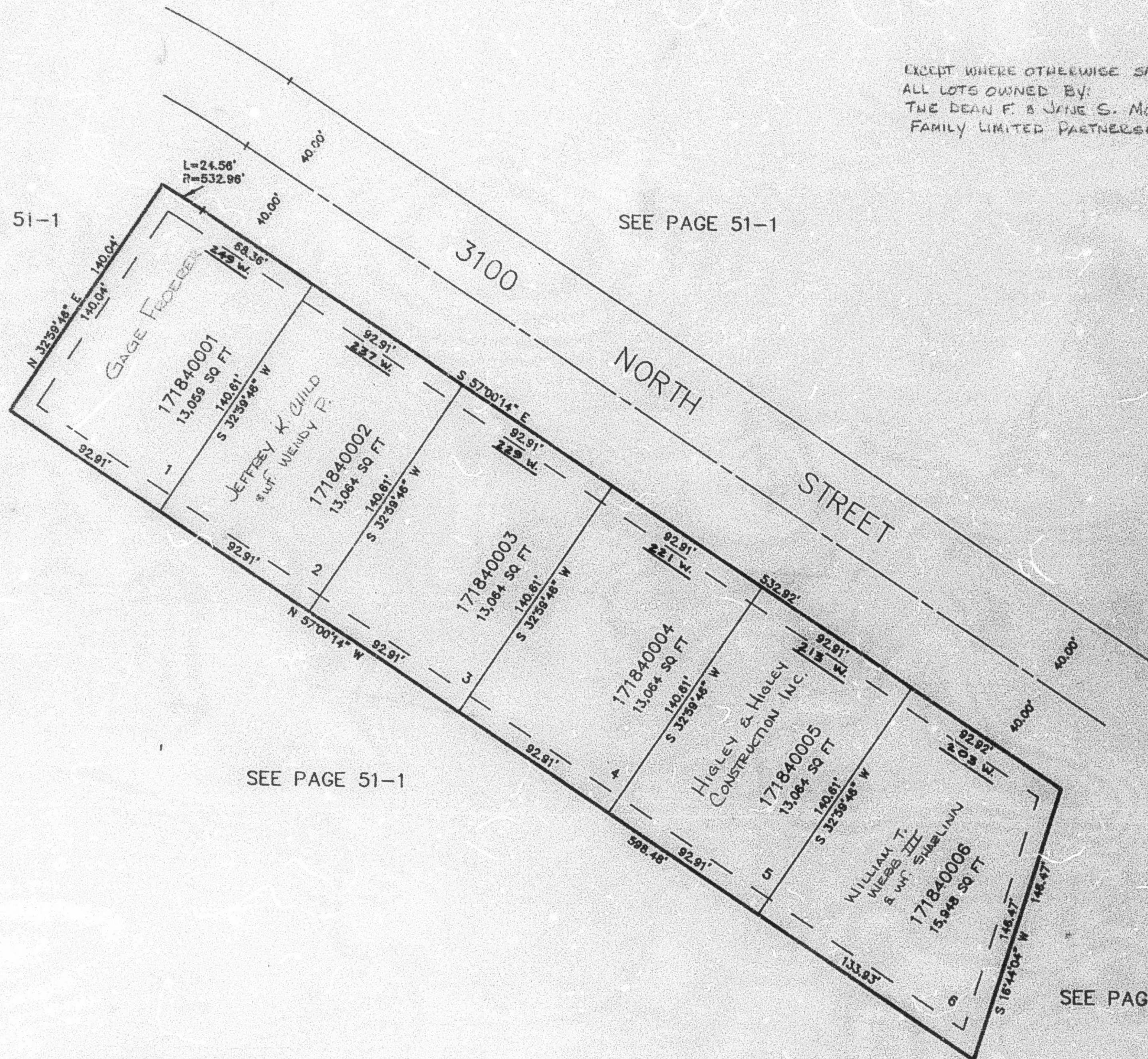
SCALE 1" = 50'

TAXING UNIT: 10

EXCEPT WHERE OTHERWISE SHOWN  
 ALL LOTS OWNED BY:  
 THE DEAN F. & JANE S. MORRIS  
 FAMILY LIMITED PARTNERSHIP

SEE PAGE 51-1

SEE PAGE 51-1



10' UTILITY & DRAINAGE EASEMENTS EACH  
 SIDE OF PROPERTY LINES AS INDICATED  
 BY DASHED LINES EXCEPT AS OTHERWISE  
 SHOWN.

FOR COMPLETE ENG DATA SEE  
 ORIGINAL DEDICATION PLAT IN  
 BOOK 34, PAGE 78 OF RECORDS.

SEE PAGE 51-1